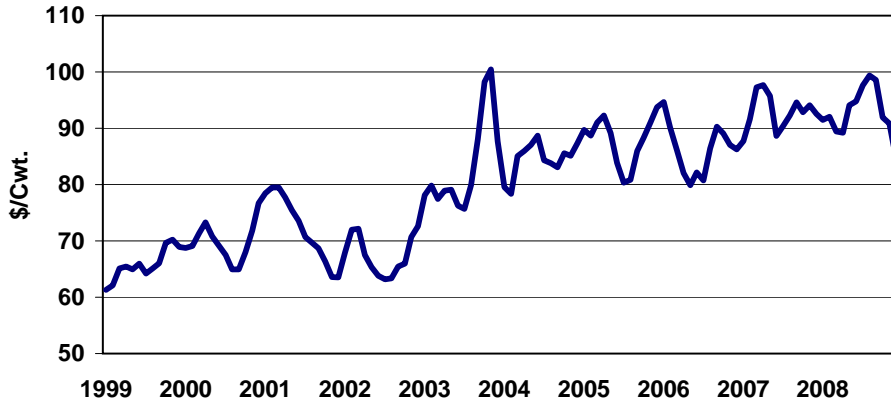
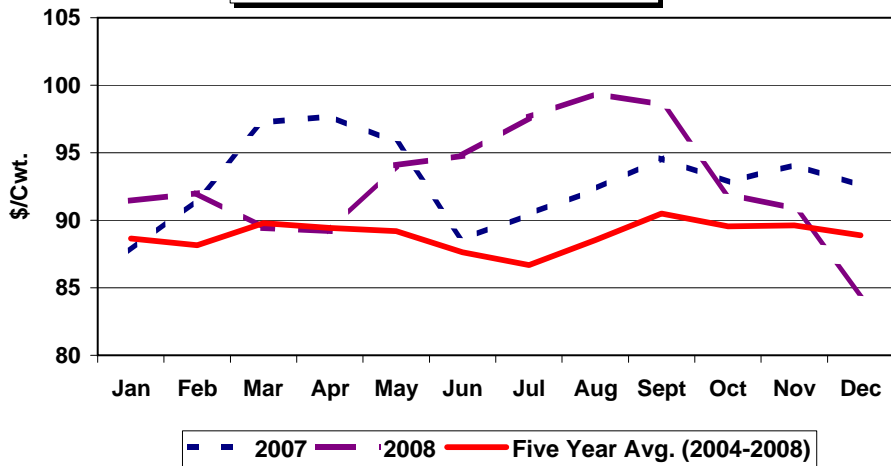


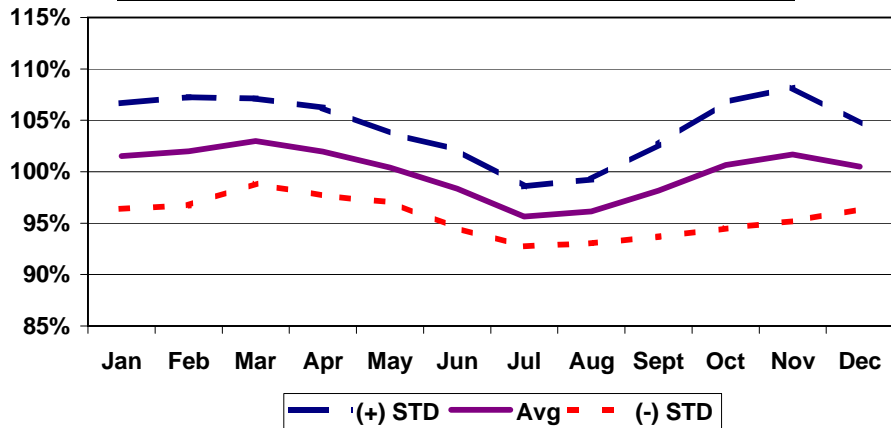
Choice Finished Cattle Prices
Southern Plains (Western Kansas, Oklahoma and Texas)
1999-2008



Choice Finished Cattle
2007, 2008, & Five Year Average



Choice Finished Cattle Seasonal Price Index
Southern Plains (Western Kansas, Oklahoma and Texas)
1999-2008



Month to Month Price Changes
Choice Finished Cattle - Southern Plains
1999-2008

Period	Number of Years Prices Increased	% of Time Prices Increased	Average Price Increase (\$/cwt)	Number of Years Prices Decreased	% of Time Prices Decreased	Average Price Decrease (\$/cwt)	Overall Average Price Change (\$/cwt)
Jan-Feb	7	70	1.78	3	30	-2.27	0.56
Feb-Mar**	6	60	3.35	3	30	-2.99	1.11
Mar-Apr	6	60	1.05	4	40	-2.70	-0.45
Apr-May	3	30	2.06	7	70	-2.09	-0.84
May-Jun	4	40	1.42	6	60	-3.39	-1.47
Jun-Jul	2	20	2.33	8	80	-2.11	-1.22
Jul-Aug	7	70	2.16	3	30	-1.33	1.12
Aug-Sep**	6	60	3.74	3	30	-0.84	1.99
Sep-Oct	6	60	3.69	4	40	-2.99	1.02
Oct-Nov	6	60	2.55	4	40	-1.59	0.89
Nov-Dec	4	40	2.96	6	60	-3.79	-1.09
Dec-Jan	6	60	2.75	4	40	-2.73	0.56

** No difference in reported prices in one year

Choice Finished Cattle

Southern Plains

Western Kansas, Oklahoma and Texas

Year	Jan	Feb	Mar	Apr	May	Jun	Jul	Aug	Sept	Oct	Nov	Dec	Avg	Low	High
1989	74.36	75.49	79.11	77.71	75.26	71.74	71.28	73.31	69.34	72.12	75.51	78.01	74.44	69.34	79.11
1990	78.86	78.60	79.60	80.25	78.44	76.74	75.28	77.65	78.18	80.19	81.66	81.28	78.89	75.28	81.66
1991	79.54	79.86	81.41	81.24	78.67	74.53	72.25	67.34	69.18	70.93	72.24	70.24	74.79	67.34	81.41
1992	73.47	77.15	78.24	77.97	75.82	73.56	72.88	74.27	74.97	76.08	75.58	77.76	75.65	72.88	78.24
1993	79.57	80.13	82.51	82.03	80.98	76.91	74.05	75.21	73.44	72.06	73.14	72.27	76.86	72.06	82.51
1994	72.75	72.84	75.48	75.54	68.32	63.70	66.11	67.97	66.80	66.43	69.23	69.33	69.54	63.70	75.54
1995	73.27	73.60	70.57	67.58	63.97	63.81	61.56	61.77	63.91	64.78	67.85	66.06	66.56	61.56	73.60
1996	63.90	62.95	61.83	59.16	59.34	61.48	63.61	67.00	71.10	70.93	70.43	65.88	64.80	59.16	71.10
1997	65.16	65.26	67.48	67.55	67.08	63.44	63.64	64.88	66.05	66.96	67.51	65.85	65.91	63.44	67.55
1998	64.35	60.70	62.23	64.62	64.55	63.93	60.28	58.78	57.99	62.02	62.26	59.70	61.78	57.99	64.62
1999	61.28	62.13	65.09	65.44	64.96	65.98	64.22	65.12	66.01	69.64	70.21	68.91	65.75	61.28	70.21
2000	68.74	69.08	71.35	73.28	70.78	69.12	67.50	64.96	64.96	67.99	71.82	76.69	69.69	64.96	76.69
2001	78.45	79.50	79.50	77.74	75.43	73.56	70.71	69.74	68.72	66.36	63.56	63.54	72.23	63.54	79.50
2002	67.94	72.01	72.18	67.48	65.35	63.83	63.19	63.34	65.46	65.96	70.69	72.64	67.51	63.19	72.64
2003	78.11	79.84	77.44	78.90	79.10	76.24	75.66	79.96	88.06	98.22	100.46	87.68	83.31	75.66	100.46
2004	79.57	78.35	85.08	85.95	87.04	88.71	84.31	83.83	83.08	85.55	85.10	87.33	84.49	78.35	88.71
2005	89.74	88.72	91.01	92.25	89.15	83.89	80.33	80.83	85.98	88.32	90.96	93.73	87.91	80.33	93.73
2006	94.68	90.11	86.13	82.04	79.89	82.16	80.72	86.40	90.29	89.09	87.06	86.25	86.24	79.89	94.68
2007	87.75	91.59	97.26	97.69	95.76	88.61	90.42	92.3	94.59	92.83	94.11	92.57	92.96	87.75	97.69
2008	91.45	92.02	89.42	89.19	94.08	94.78	97.62	99.35	98.59	91.94	90.88	84.61	92.83	84.61	99.35
1999-2008															
Average	79.77	80.34	81.45	81.00	80.15	78.69	77.47	78.58	80.57	81.59	82.49	81.40	80.29	73.96	87.37
S.I.	101.5%	102.0%	103.0%	101.9%	100.4%	98.3%	95.7%	96.1%	98.2%	100.6%	101.7%	100.5%	100.0%	95.7%	103.0%
STD	5.1%	5.3%	4.1%	4.3%	3.4%	3.8%	2.9%	3.1%	4.5%	6.1%	6.5%	4.2%	4.4%	2.9%	6.5%
2004-2008															
Average	88.64	88.16	89.78	89.42	89.18	87.63	86.68	88.54	90.51	89.55	89.62	88.90	88.88	82.19	94.83
S.I.	100.1%	99.1%	100.7%	100.2%	100.0%	98.5%	94.4%	96.9%	101.0%	103.6%	104.1%	101.5%	100.0%	94.4%	104.1%
STD	6.0%	5.0%	4.3%	5.3%	4.3%	4.0%	3.3%	3.2%	3.7%	6.6%	7.6%	4.0%	4.8%	3.2%	7.6%