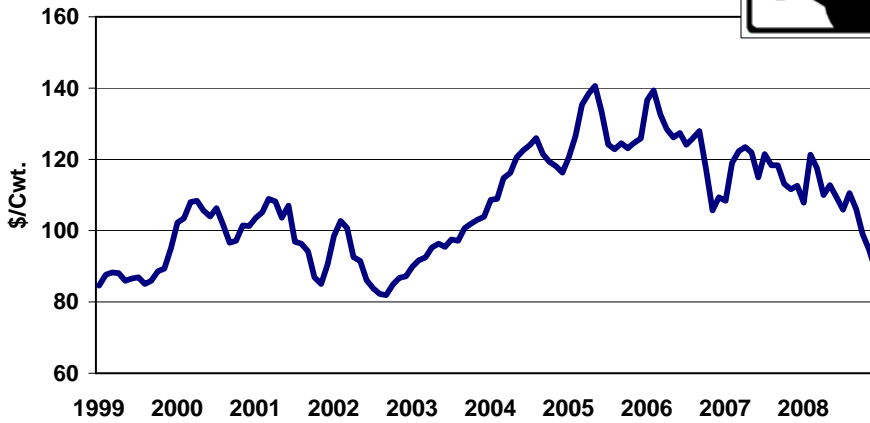
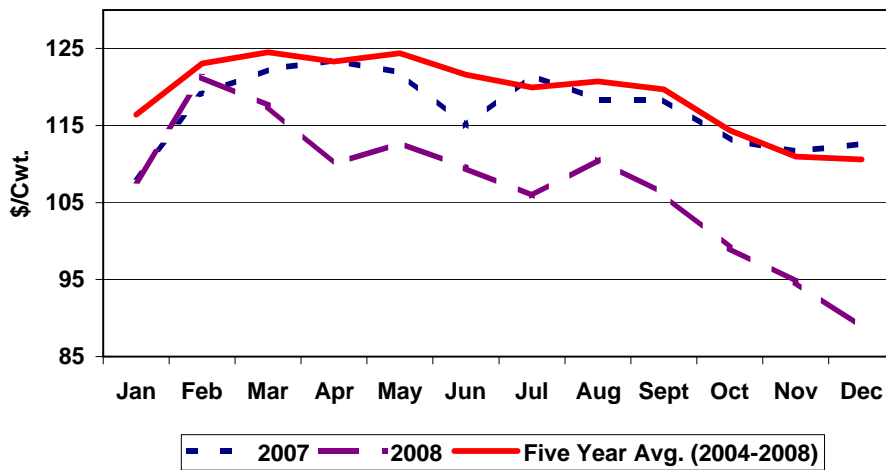


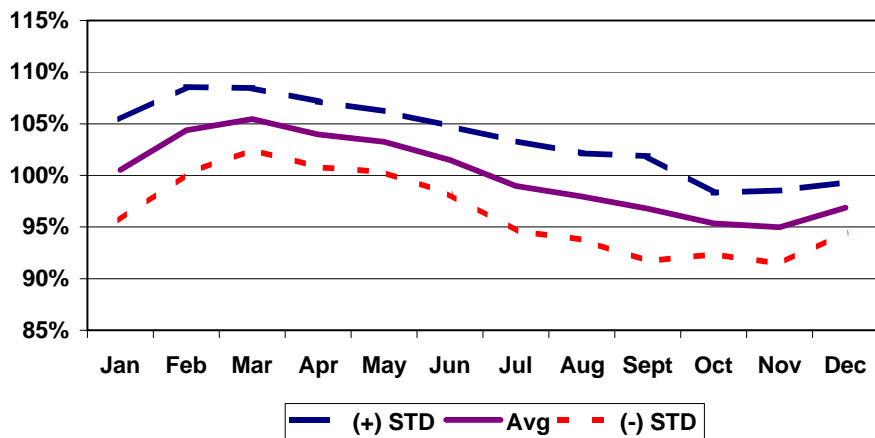
Tennessee Steer Prices
400-500 lbs., 1999-2008



Tennessee Steer Prices
2007, 2008, & Five Year Average, 400-500 lbs.



Tennessee Steer Seasonal Price Index
Medium No. 1, 400-500 lbs., 1999-2008



Month to Month Price Changes*
 400-500 lbs. Steers - Medium Frame No. 1
 1999-2008

Period	Number of Years Prices Increased	% of Time Prices Increased	Average Price Increase (\$/cwt)	Number of Years Prices Decreased	% of Time Prices Decreased	Average Price Decrease (\$/cwt)	Overall Average Price Change (\$/cwt)
Jan-Feb	10	100	4.50	0	0	0.00	4.50
Feb-Mar	7	70	3.93	3	30	-4.12	1.51
Mar-Apr	5	50	1.77	5	50	-4.15	-1.19
Apr-May	4	40	2.63	6	60	-2.41	-0.39
May-Jun	4	40	1.82	6	60	-4.22	-1.80
Jun-Jul	5	50	2.52	5	50	-5.71	-1.59
Jul-Aug	3	30	2.84	7	70	-1.93	-0.50
Aug-Sep	5	50	1.60	5	50	-3.31	-0.85
Sep-Oct	4	40	1.89	6	60	-5.64	-2.63
Oct-Nov	5	50	1.93	5	50	-4.09	-1.08
Nov-Dec	7	70	2.64	3	30	-2.67	1.05
Dec-Jan	8	80	6.47	2	20	-2.87	4.61

*Prices on reported Tennessee Auctions

Tennessee Steer Prices

400-500 lbs.



Year	Jan	Feb	Mar	Apr	May	Jun	Jul	Aug	Sept	Oct	Nov	Dec	Avg	Low	High
1989	94.38	97.88	97.20	93.13	91.30	95.00	96.00	95.50	93.50	89.94	87.65	86.08	93.13	86.08	97.88
1990	92.80	96.81	101.75	100.94	101.20	100.56	98.75	101.40	97.69	95.15	96.56	100.67	98.69	92.80	101.75
1991	101.50	109.81	110.13	112.69	108.40	106.56	103.45	98.13	98.44	93.70	89.69	88.67	101.76	88.67	112.69
1992	89.31	95.00	95.77	94.72	89.34	94.05	91.29	92.56	90.11	85.72	85.47	86.00	90.78	85.47	95.77
1993	92.96	95.81	100.17	102.10	102.06	100.60	98.12	97.28	94.39	93.25	91.16	91.64	96.63	91.16	102.10
1994	94.34	98.08	100.92	87.86	89.64	84.25	84.67	84.62	79.85	77.10	79.62	81.42	86.86	77.10	100.92
1995	84.92	86.47	82.49	77.98	74.20	72.64	67.48	65.78	63.00	61.20	60.58	59.90	71.39	59.90	86.47
1996	57.00	59.23	58.83	55.17	53.63	54.98	54.65	58.22	58.04	57.03	58.41	59.59	57.07	53.63	59.59
1997	72.26	79.18	84.49	87.15	87.53	87.64	90.48	88.17	86.22	83.94	80.62	87.48	84.60	72.26	90.48
1998	92.11	94.46	93.81	96.55	90.13	82.39	74.65	75.77	70.91	73.19	75.17	78.86	83.17	70.91	96.55
1999	84.56	87.68	88.27	88.13	85.97	86.58	86.91	85.08	85.91	88.61	89.31	95.22	87.69	84.56	95.22
2000	102.31	103.47	108.03	108.35	105.72	104.02	106.34	101.59	96.60	97.16	101.47	101.26	103.03	96.60	108.35
2001	103.63	105.16	108.89	108.20	103.63	107.01	96.92	96.34	94.16	86.94	85.06	90.56	98.88	85.06	108.89
2002	98.47	102.70	100.73	92.61	91.48	86.10	83.83	82.27	81.87	84.84	86.77	87.18	89.90	81.87	102.70
2003	89.86	91.66	92.54	95.25	96.39	95.50	97.48	97.18	100.66	101.98	103.13	103.93	97.13	89.86	103.93
2004	108.63	108.96	114.77	116.17	120.60	122.58	123.99	125.98	121.51	119.34	118.12	116.32	118.08	108.63	125.98
2005	120.58	126.64	135.29	138.48	140.62	133.52	124.22	122.88	124.54	123.09	124.65	125.87	128.37	120.58	140.62
2006	136.63	139.35	132.66	128.51	126.13	127.43	124.14	125.94	127.97	117.20	105.70	109.33	125.08	105.70	139.35
2007	108.37	119.02	122.28	123.48	121.90	114.96	121.52	118.35	118.36	113.15	111.63	112.64	117.14	108.37	123.48
2008	107.87	121.28	117.59	109.96	112.76	109.47	105.87	110.58	106.09	99.08	94.73	88.72	107.00	88.72	121.28
1999-2008															
Average	106.09	110.59	112.10	110.91	110.52	108.72	107.12	106.62	105.77	103.14	102.06	103.10	107.23	96.99	116.98
S.I.	100.5%	104.4%	105.5%	104.0%	103.3%	101.5%	99.0%	98.0%	96.8%	95.3%	95.0%	96.9%	100.0%	95.0%	105.5%
STD	4.9%	4.2%	3.0%	3.2%	2.9%	3.3%	4.3%	4.2%	5.1%	3.0%	3.6%	2.4%	3.7%	2.4%	5.1%
2004-2008															
Average	116.42	123.05	124.52	123.32	124.40	121.59	119.95	120.75	119.69	114.37	110.97	110.58	119.13	106.40	130.14
S.I.	97.3%	102.8%	103.9%	102.8%	103.8%	101.7%	100.6%	100.1%	100.2%	96.9%	94.7%	95.3%	100.0%	94.7%	103.9%
STD	5.2%	4.3%	1.9%	3.9%	3.7%	2.3%	3.0%	3.9%	3.5%	1.5%	3.5%	2.9%	3.3%	1.5%	5.2%