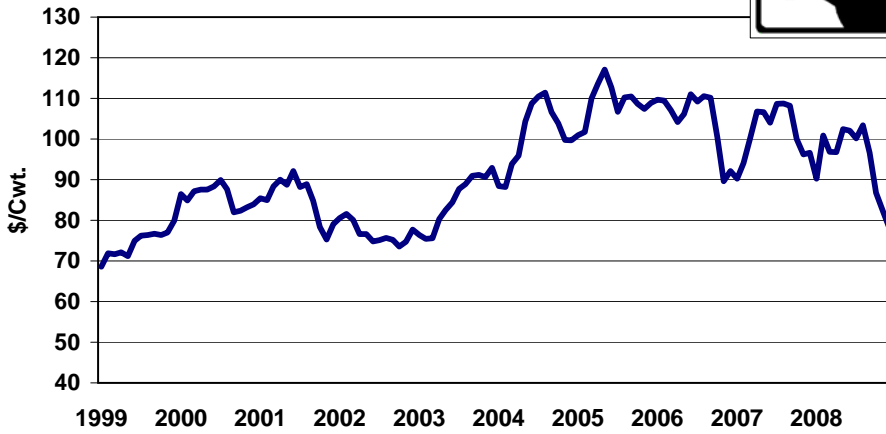
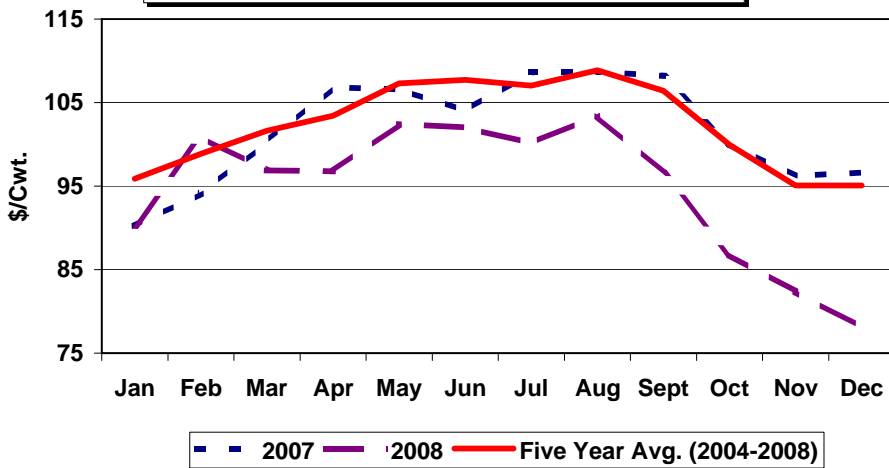


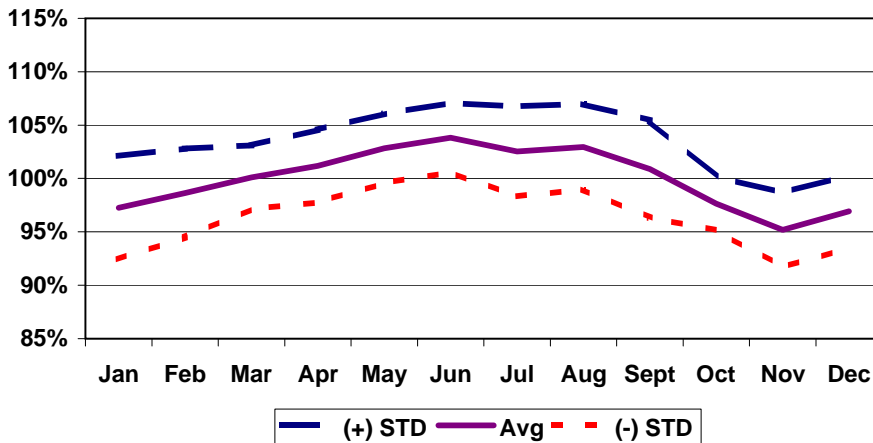
**Tennessee Steer Prices**  
600-700 lbs., 1999-2008



**Tennessee Steer Prices**  
2007, 2008, & Five Year Average, 600-700 lbs.



**Tennessee Steer Seasonal Price Index**  
Medium No. 1, 600-700 lbs., 1999-2008



Month to Month Price Changes\*  
600-700 lbs. Steers - Medium Frame No. 1  
1999-2008

<b>Period</b>	<b>Number of Years Prices Increased</b>	<b>% of Time Prices Increased</b>	<b>Average Price Increase (\$/cwt)</b>	<b>Number of Years Prices Decreased</b>	<b>% of Time Prices Decreased</b>	<b>Average Price Decrease (\$/cwt)</b>	<b>Overall Average Price Change (\$/cwt)</b>
Jan-Feb	5	50	3.94	5	50	-0.69	1.63
Feb-Mar	6	60	4.32	4	40	-2.02	1.78
Mar-Apr	7	70	2.78	3	30	-2.19	1.29
Apr-May**	5	50	4.35	4	40	-0.63	1.93
May-Jun	6	60	3.21	4	40	-2.29	1.01
Jun-Jul	6	60	2.12	4	40	-3.42	-0.09
Jul-Aug	9	90	1.32	1	10	-2.26	0.96
Aug-Sep	3	30	0.88	7	70	-3.27	-2.02
Sep-Oct	2	20	0.31	8	80	-5.09	-4.01
Oct-Nov	3	30	0.89	7	70	-4.01	-2.54
Nov-Dec	8	80	2.14	2	20	-2.24	1.27
Dec-Jan	6	60	3.50	4	40	-3.53	0.69

\*Prices on reported Tennessee Auctions

\*\* No difference in reported prices in one year

# Tennessee Steer Prices

## 600-700 lbs.



Year	Jan	Feb	Mar	Apr	May	Jun	Jul	Aug	Sept	Oct	Nov	Dec	Avg	Low	High
1989	81.31	81.06	78.65	77.13	77.25	81.19	80.81	82.38	80.03	79.38	78.30	79.77	79.77	77.13	82.38
1990	80.03	80.44	81.82	84.88	85.65	85.78	85.38	88.45	86.00	83.75	82.44	85.50	84.18	80.03	88.45
1991	85.18	89.25	90.60	93.94	90.70	90.13	89.50	85.25	83.63	81.80	78.16	75.83	86.16	75.83	93.94
1992	76.16	78.60	79.26	79.98	78.49	79.06	80.83	81.99	80.26	77.24	74.40	78.43	78.73	74.40	81.99
1993	82.14	81.82	83.97	86.68	87.69	86.49	85.73	85.23	84.30	82.18	79.91	79.21	83.78	79.21	87.69
1994	79.46	80.35	77.47	76.05	77.17	74.04	76.42	75.62	70.43	66.93	68.02	68.80	74.23	66.93	80.35
1995	71.57	70.29	68.05	66.96	64.70	64.32	62.07	61.34	59.72	58.84	57.90	57.00	63.56	57.00	71.57
1996	53.26	53.15	52.58	49.69	50.46	54.01	55.58	56.89	56.72	54.80	57.07	57.76	54.33	49.69	57.76
1997	64.66	67.26	71.44	74.36	77.18	77.03	79.98	77.53	75.68	71.99	70.09	73.70	73.41	64.66	79.98
1998	76.03	77.15	77.45	78.71	76.09	72.66	66.45	66.38	63.53	64.29	62.79	63.09	70.39	62.79	78.71
1999	68.57	71.92	71.69	72.16	71.15	74.95	76.22	76.37	76.71	76.39	77.01	79.91	74.42	68.57	79.91
2000	86.48	84.90	87.16	87.58	87.58	88.37	89.91	87.65	82.00	82.35	83.19	83.92	85.92	82.00	89.91
2001	85.41	84.99	88.32	90.00	88.74	92.14	88.22	88.93	84.77	78.35	75.25	79.08	85.35	75.25	92.14
2002	80.56	81.60	80.12	76.62	76.59	74.84	75.08	75.70	75.22	73.51	74.73	77.75	76.86	73.51	81.60
2003	76.41	75.40	75.62	80.33	82.50	84.38	87.71	88.92	90.94	91.21	90.63	92.89	84.75	75.40	92.89
2004	88.42	88.22	93.85	95.88	104.30	108.77	110.51	111.43	106.61	103.85	99.79	99.66	100.94	88.22	111.43
2005	100.94	101.73	110.01	113.62	117.11	112.70	106.70	110.23	110.51	108.65	107.41	108.88	109.04	100.94	117.11
2006	109.67	109.45	107.10	104.15	106.14	111.06	109.22	110.56	110.19	100.46	89.64	92.11	104.98	89.64	111.06
2007	90.21	94.10	100.29	106.81	106.60	104.02	108.64	108.73	108.19	100.01	96.20	96.65	101.70	90.21	108.73
2008	90.25	100.87	96.87	96.75	102.43	102.03	100.12	103.42	96.59	86.81	82.37	78.02	94.71	78.02	103.42
<b>1999-2008</b>															
Average	87.69	89.32	91.10	92.39	94.31	95.32	95.23	96.19	94.17	90.16	87.62	88.89	91.87	82.18	98.82
S.I.	97.3%	98.7%	100.1%	101.2%	102.8%	103.8%	102.5%	103.0%	100.9%	97.7%	95.2%	96.9%	100.0%	95.2%	103.8%
STD	4.8%	4.1%	3.0%	3.4%	3.3%	3.2%	4.2%	4.0%	4.6%	2.5%	3.5%	3.4%	3.7%	2.5%	4.8%
<b>2004-2008</b>															
Average	95.90	98.87	101.62	103.44	107.32	107.71	107.04	108.87	106.42	99.96	95.08	95.06	102.27	89.41	110.35
S.I.	93.3%	96.1%	98.6%	100.4%	104.3%	104.9%	103.9%	104.9%	103.9%	99.2%	94.9%	95.8%	100.0%	93.3%	104.9%
STD	4.2%	3.9%	2.3%	4.3%	3.1%	2.0%	3.9%	3.2%	2.7%	1.5%	4.2%	3.9%	3.3%	1.5%	4.3%