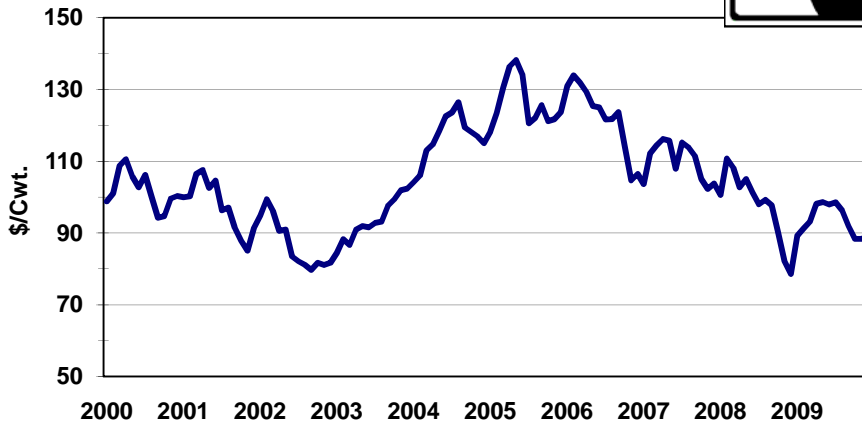
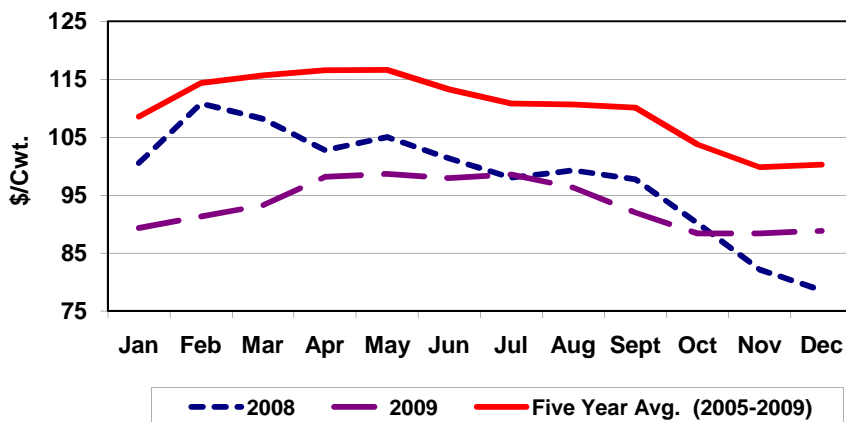


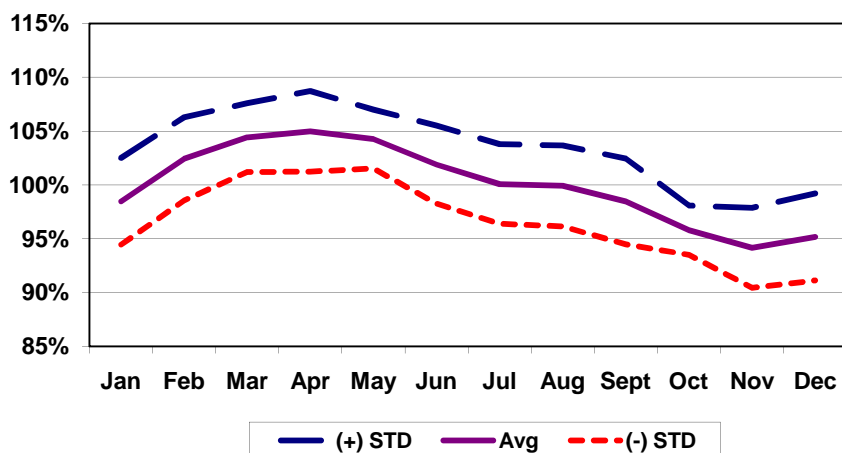
**Tennessee Heifer Prices**  
300-400 Lbs., 2000-2009



**Tennessee Heifer Prices**  
2008, 2009, & Five Year Average, 300-400 Lbs.



**Tennessee Heifer Seasonal Price Index**  
Medium No. 1, 300-400 lbs., 2000-2009



Month to Month Price Changes  
300-400 lbs. Heifers - Medium Frame No. 1  
2000-2009

<b>Period</b>	<b>Number of Years Prices Increased</b>	<b>% of Time Prices Increased</b>	<b>Average Price Increase (\$/cwt)</b>	<b>Number of Years Prices Decreased</b>	<b>% of Time Prices Decreased</b>	<b>Average Price Decrease (\$/cwt)</b>	<b>Overall Average Price Change (\$/cwt)</b>
Jan-Feb	10	100	4.17	0	0	0.00	4.17
Feb-Mar	6	60	5.37	4	40	-2.38	2.27
Mar-Apr	7	70	3.08	3	30	-4.54	0.79
Apr-May	6	60	1.59	4	40	-3.54	-0.46
May-Jun	2	20	3.10	8	80	-3.46	-2.15
Jun-Jul	5	50	2.74	5	50	2.55	2.64
Jul-Aug	6	60	1.15	4	40	-2.63	-0.36
Aug-Sep	3	30	3.32	7	70	-4.07	-1.85
Sep-Oct	3	30	1.44	7	70	-5.22	-3.22
Oct-Nov	3	30	2.63	7	70	-3.54	-1.69
Nov-Dec	8	80	1.73	2	20	-2.75	0.84
Dec-Jan	7	70	5.01	3	30	-2.15	2.87

Source: USDA/Tennessee Department of Agriculture Market News Service

# Tennessee Heifer Prices

## 300-400 lbs.



Year	Jan	Feb	Mar	Apr	May	Jun	Jul	Aug	Sept	Oct	Nov	Dec	Avg	Low	High
1990	86.65	93.63	98.50	100.50	98.10	97.38	95.13	99.30	94.25	89.60	91.19	98.33	95.21	86.65	100.50
1991	98.00	106.75	109.00	113.13	110.80	106.63	103.40	98.81	96.25	90.20	85.19	85.25	100.28	85.19	113.13
1992	87.69	93.60	91.68	91.24	87.44	86.51	87.82	89.51	86.18	81.50	81.57	82.50	87.27	81.50	93.60
1993	87.64	91.16	94.22	97.20	96.69	94.93	93.72	92.13	89.55	87.70	85.93	85.90	91.40	85.90	97.20
1994	89.50	91.98	95.69	93.29	86.52	82.03	83.35	82.51	76.70	73.43	74.92	76.15	83.84	73.43	95.69
1995	79.62	80.09	77.39	73.45	69.84	69.01	62.88	62.69	57.59	53.70	51.08	52.21	65.79	51.08	80.09
1996	47.44	48.85	48.38	44.78	43.18	45.50	45.60	49.93	48.65	46.43	48.49	50.09	47.28	43.18	50.09
1997	60.10	66.82	75.60	77.35	78.90	80.81	84.19	81.40	79.79	75.24	71.56	77.19	75.75	60.10	84.19
1998	81.90	83.53	85.80	89.11	83.31	77.05	69.86	69.30	65.60	67.37	68.01	70.48	75.94	65.60	89.11
1999	76.77	80.24	81.69	82.33	80.87	82.67	82.85	80.87	81.83	83.49	83.55	90.47	82.30	76.77	90.47
2000	98.79	101.02	108.72	110.55	105.76	102.75	106.19	100.17	94.22	94.72	99.57	100.33	101.90	94.22	110.55
2001	99.93	100.21	106.50	107.57	102.54	104.60	96.35	97.13	91.47	87.86	85.06	91.39	97.55	85.06	107.57
2002	94.90	99.44	96.24	90.63	90.96	83.44	82.09	81.19	79.70	81.69	81.08	81.69	86.92	79.70	99.44
2003	84.45	88.28	86.68	90.95	91.90	91.55	92.82	93.17	97.62	99.45	101.97	102.39	93.44	84.45	102.39
2004	104.17	106.00	112.95	114.72	118.42	122.56	123.59	126.45	119.45	118.19	116.95	115.04	116.54	104.17	126.45
2005	118.29	123.39	130.59	136.40	138.18	134.13	120.56	122.11	125.68	121.23	121.76	123.67	126.33	118.29	138.18
2006	130.87	133.97	131.91	129.30	125.40	124.99	121.68	121.74	123.67	114.06	104.66	106.46	122.39	104.66	133.97
2007	103.66	112.19	114.38	116.23	115.79	107.88	115.24	113.88	111.43	105.01	102.27	103.81	110.15	102.27	116.23
2008	100.56	110.80	108.16	102.76	105.02	101.30	97.97	99.27	97.71	90.12	82.13	78.54	97.86	78.54	110.80
2009	89.30	91.33	93.22	98.14	98.64	97.95	98.53	96.30	91.94	88.37	88.35	88.84	93.41	88.35	98.64
<b>2000-2009</b>															
Average	102.49	106.66	108.93	109.72	109.26	107.11	105.50	105.14	103.29	100.07	98.38	99.22	104.65	93.97	114.42
S.I.	98.5%	102.4%	104.4%	105.0%	104.3%	101.9%	100.1%	99.9%	98.5%	95.8%	94.2%	95.2%	100.0%	94.2%	105.0%
STD	4.0%	3.9%	3.2%	3.7%	2.7%	3.6%	3.7%	3.7%	4.0%	2.3%	3.7%	4.0%	3.6%	2.3%	4.0%
<b>2005-2009</b>															
Average	108.54	114.33	115.65	116.57	116.60	113.25	110.79	110.66	110.09	103.76	99.83	100.26	110.03	98.42	119.56
S.I.	96.6%	102.4%	104.1%	105.2%	105.4%	102.4%	99.9%	100.8%	101.6%	96.0%	92.2%	93.3%	100.0%	92.2%	105.4%
STD	4.3%	3.1%	1.0%	3.5%	3.3%	2.9%	3.4%	3.2%	2.6%	1.3%	3.1%	4.8%	3.0%	1.0%	4.8%

Source: USDA/Tennessee Department of Agriculture Market News Service