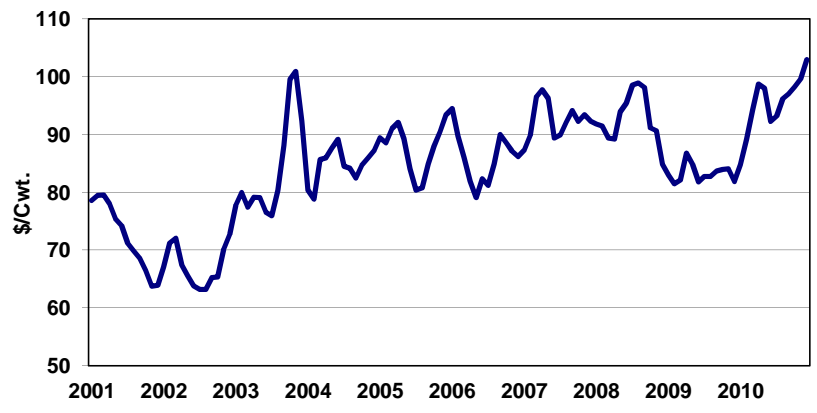
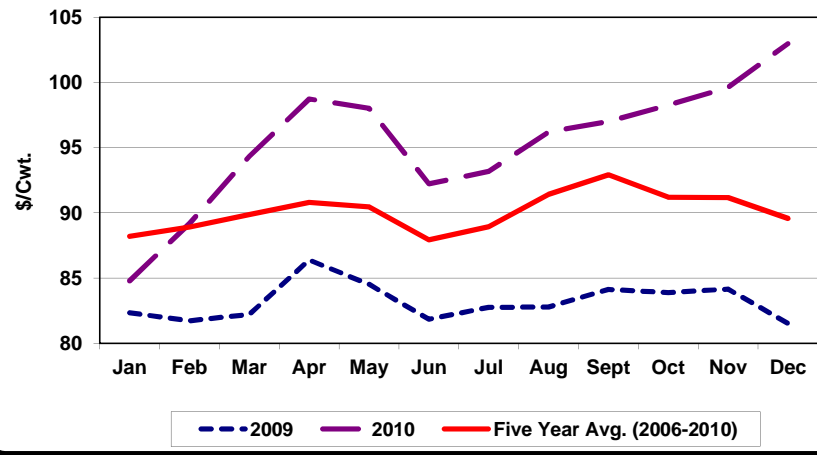


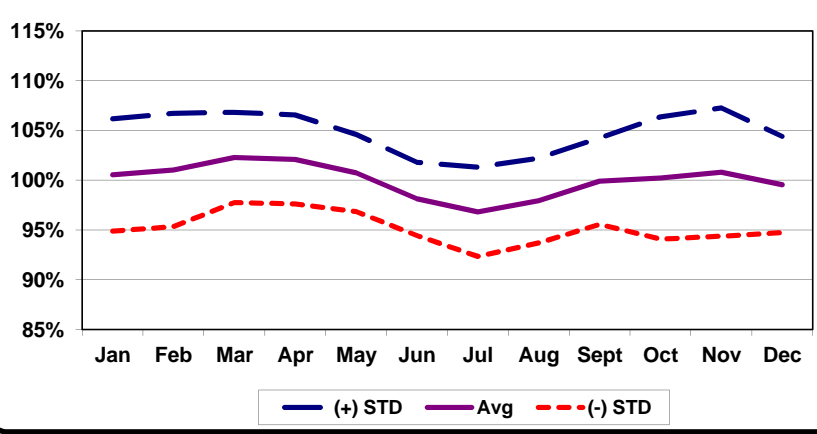
**Choice Finished Cattle Prices  
Five Market Area, 2001-2010**



**Choice Finished Cattle  
2009, 2010, & Five Year Average**



**Choice Finished Cattle Seasonal Price Index  
Five Market Area, 2001-2010**



Source: Livestock Marketing Information Center

Month to Month Price Changes  
Choice Finished Cattle - Five Market Area  
2001-2010

<b>Period</b>	<b>Number of Years Prices Increased</b>	<b>% of Time Prices Increased</b>	<b>Average Price Increase (\$/cwt)</b>	<b>Number of Years Prices Decreased</b>	<b>% of Time Prices Decreased</b>	<b>Average Price Decrease (\$/cwt)</b>	<b>Overall Average Price Change (\$/cwt)</b>
Jan-Feb	6	60	2.61	4	40	-1.86	0.82
Feb-Mar*	6	60	3.41	3	30	-2.99	1.15
Mar-Apr	6	60	2.10	4	40	-2.70	0.18
Apr-May	3	30	2.06	7	70	-2.03	-0.80
May-Jun	3	30	1.55	7	70	-3.87	-2.25
Jun-Jul	4	40	1.63	6	60	-2.25	-0.70
Jul-Aug	8	80	2.16	2	20	-0.73	1.59
Aug-Sep	7	70	3.38	3	30	-0.84	2.12
Sep-Oct	5	50	3.34	5	50	-2.44	0.45
Oct-Nov	6	60	2.09	4	40	-1.59	0.62
Nov-Dec	4	40	2.58	6	60	-4.01	-1.37
Dec-Jan	7	70	2.98	3	30	-3.83	0.93

\* No difference in reported prices in one year

Source: Livestock Marketing Information Center

# Choice Finished Cattle

## Five Market Area (Texas-Oklahoma; Kansas; Nebraska; Colorado; Iowa-Minnesota)

Year	Jan	Feb	Mar	Apr	May	Jun	Jul	Aug	Sept	Oct	Nov	Dec	Avg	Low	High
1991	79.54	79.86	81.41	81.24	78.67	74.53	72.25	67.34	69.18	70.93	72.24	70.24	74.79	67.34	81.41
1992	73.47	77.15	78.24	77.97	75.82	73.56	72.88	74.27	74.97	76.08	75.58	77.76	75.65	72.88	78.24
1993	79.57	80.13	82.51	82.03	80.98	76.91	74.05	75.21	73.44	72.06	73.14	72.27	76.86	72.06	82.51
1994	72.75	72.84	75.48	75.54	68.32	63.70	66.11	67.97	66.80	66.43	69.23	69.33	69.54	63.70	75.54
1995	73.27	73.60	70.57	67.58	63.97	63.81	61.56	61.77	63.91	64.78	67.85	66.06	66.56	61.56	73.60
1996	63.90	62.95	61.83	59.16	59.34	61.48	63.61	67.00	71.10	70.93	70.43	65.88	64.80	59.16	71.10
1997	65.16	65.26	67.48	67.55	67.08	63.44	63.64	64.88	66.05	66.96	67.51	65.85	65.91	63.44	67.55
1998	64.35	60.70	62.23	64.62	64.55	63.93	60.28	58.78	57.99	62.02	62.26	59.70	61.78	57.99	64.62
1999	61.28	62.13	65.09	65.44	64.96	65.98	64.22	65.12	66.01	69.64	70.21	68.91	65.75	61.28	70.21
2000	68.74	69.08	71.35	73.28	70.78	69.12	67.50	64.96	64.96	67.99	71.82	76.69	69.69	64.96	76.69
2001	78.45	79.50	79.50	77.74	75.43	73.56	70.71	69.74	68.72	66.36	63.56	63.54	72.23	63.54	79.50
2002	67.94	72.01	72.18	67.48	65.35	63.83	63.19	63.34	65.46	65.96	70.69	72.64	67.51	63.19	72.64
2003	78.11	79.84	77.44	78.90	79.10	76.24	75.66	79.96	88.06	98.22	100.46	87.68	83.31	75.66	100.46
2004	79.57	78.35	85.08	85.95	87.04	88.71	84.31	83.83	83.08	85.55	85.10	87.33	84.49	78.35	88.71
2005	89.74	88.72	91.01	92.25	89.15	83.89	80.33	80.83	85.98	88.32	90.96	93.73	87.91	80.33	93.73
2006	94.68	90.11	86.13	82.04	79.89	82.16	80.72	86.40	90.29	89.09	87.06	86.25	86.24	79.89	94.68
2007	87.75	91.59	97.26	97.69	95.76	88.61	90.42	92.30	94.59	92.83	94.11	92.57	92.96	87.75	97.69
2008	91.45	92.02	89.42	89.19	94.08	94.78	97.62	99.35	98.59	91.94	90.88	84.61	92.83	84.61	99.35
2009	82.35	81.74	82.22	86.39	84.54	81.85	82.76	82.80	84.13	83.89	84.17	81.55	83.20	81.55	86.39
2010	84.80	89.20	94.33	98.74	98.01	92.24	93.18	96.21	97.02	98.26	99.60	102.97	95.38	84.80	102.97
<b>2001-2010</b>															
Average	83.48	84.31	85.46	85.64	84.84	82.59	81.89	83.48	85.59	86.04	86.66	85.29	84.60	77.97	91.61
S.I.	100.5%	101.0%	102.3%	102.1%	100.7%	98.1%	96.8%	98.0%	99.9%	100.2%	100.8%	99.6%	100.0%	96.8%	102.3%
STD	5.7%	5.7%	4.5%	4.5%	3.9%	3.7%	4.5%	4.3%	4.3%	6.1%	6.4%	4.8%	4.9%	3.7%	6.4%
<b>2006</b>															
2010	88.21	88.93	89.87	90.81	90.46	87.93	88.94	91.41	92.92	91.20	91.16	89.59	90.12	83.72	96.22
S.I.	99.6%	99.4%	100.6%	101.8%	101.0%	98.4%	99.2%	101.0%	102.5%	99.9%	99.4%	97.3%	100.0%	97.3%	102.5%
STD	5.5%	3.2%	4.2%	5.7%	5.1%	2.4%	4.1%	3.6%	3.9%	1.8%	2.0%	2.5%	3.7%	1.8%	5.7%

Source: Livestock Marketing Information Center